



REC #: 752853

RECORDED 5/8/2019 AT 1:21 PM BK# 2620 PG# 1895  
Debra K. Lee, CLERK OF LARAMIE COUNTY, WY PAGE 1 OF 1

# STATE OF WYOMING CORNER RECORD

(In compliance with the CORNER PERPETUATION AND FILING ACT, Wyoming Statutes, 1997 Section 33-29-140, et. seq., and the Rules and Regulations of the Board of Registrations for Professional Engineers and Professional Land Surveyors)

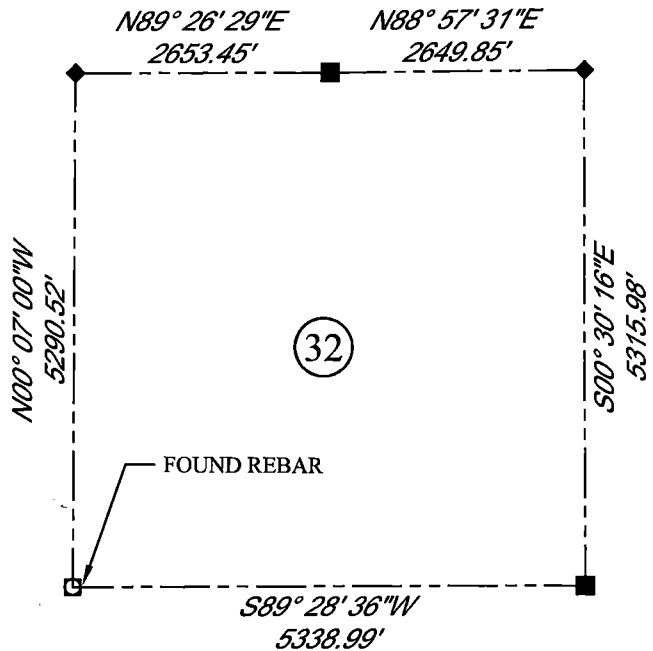
## SOUTH WEST CORNER SECTION 32, T. 18 N., R. 63 W., 6TH P.M., LARAMIE COUNTY, WYOMING

**GLO:** SET A SANDSTONE 17X12X5 11 IN. DEEP WITH 1 MARK ON THE WEST AND 5 ON EAST EDGES FOR CORNER TO SECTIONS 5, 6, 31 AND 32.

**FOUND:** REBAR WITH NO CAP, FOUND REBAR +/- ON WEST SIDE OF NORTH/SOUTH/EAST FENCE CORNER.



SCALE: NONE  
NORTH DETERMINED BY  
G.P.S OBSERVATIONS



FOUND REBAR, NO CAP



### LEGEND:

- FOUND BLM CAP
- ◐ FOUND USFS CAP
- FOUND STONE
- ◑ FOUND PRIVATE MONUMENT
- ◆ CALCULATED POSITION
- ▲ SET MONUMENT (LS10245)
- SECTION LINE

DATE OF FIELD WORK: 08/22/2018 OFFICE REFERENCE: 746049

### CROSS INDEX DIAGRAM

	1	2	3	4	5	6	7	8	9	10	11	12	13	14	15	16	17	18	19	20	21	22	23	24	25		
A																											A
B																											B
C			6		5		4		3		2		1														C
D																											D
E																											E
F																											F
G			7		8		9		10		11		12														G
H																											H
J																											J
K																											K
L			18		17		16		15		14		13														L
M																											M
N																											N
O			19		20		21		22		23		24														O
P																											P
Q																											Q
R																											R
S																											S
T			30		29		28		27		26		25														T
U																											U
V																											V
W																											W
X			31		32		33		34		35		36														X
Y																											Y
Z																											Z
	1	2	3	4	5	6	7	8	9	10	11	12	13	14	15	16	17	18	19	20	21	22	23	24	25		

WOOD  
2615 AVIATION DRIVE  
SHERIDAN, WY 82801  
PH: 307-675-6400



THIS CORNER RECORD WAS  
PREPARED BY ME OR UNDER  
MY DIRECTION AND  
SUPERVISION,  
SEAL AND SIGNATURE

